

DiskAnalyzer Pro

Version 3.0

User Manual



Contents

Introduction

- What is DiskAnalyzer Pro
- System Requirements

How to Use

- Main Window
- Scanning drives / paths
- Understanding Scan / Analysis results
- Managing Files and Folders
- Generating Disk Space Reports
- Working with File Viewer
- Customizing and Configuring

Purchase and Support

- Purchase DiskAnalyzer Pro
- Technical Support

Introduction

What is DiskAnalyzer Pro?

DiskAnalyzer Pro is a hard disk space usage analysis and management software. It can analyze local and network disk drives, USB disks and other removable drives for files and folders consuming your disk space. You will get various disk space reports which will help you find out exact disk space utilization.

You can customize the scan, drill down each report to file level and see files grouped by various parameters including file types, file attributes, ownership, file date / time etc. DiskAnalyzer Pro reports you list of zero size files, biggest and oldest files on your disk, duplicate files, without extension files, compressed files, audio / video files, graphics files, internet temporary files. You can delete the files not required, move them to a new location or zip to a file from within the program.

The disk space reports can be exported and archived to external files including HTML, CSV, ASCII Text and XML. You can compare these reports with current disk space reports whenever required or according to your disk space maintenance schedule and check out what is consuming more disk space.

System Requirements

Operating System :- Microsoft Windows 2000, XP, 2003, 2003, Server editions and Vista

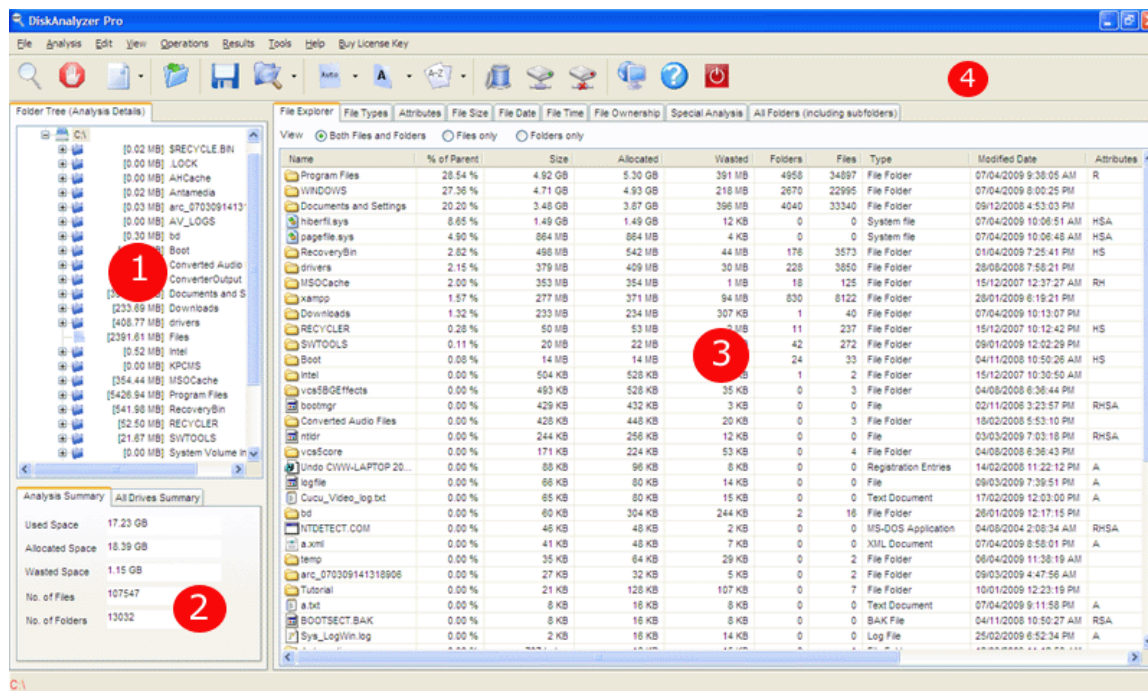
RAM (Memory) :- 512 MB or Above (Recommended for faster scan)

Processor : Intel Pentium or compatible processor

Disk Space : 2 MB

How to Use

Main Window



1. Folder Tree : This is similar to Windows Explorer folder tree. You can explore and drill down to each folder. When you click on any folder, you can see folder contents in the file explorer pane to the right side similar to Windows Explorer.

2. Analysis Summary : This summary has two tabs. The first tab shows files, folders and consumed disk space summary for current analysis path. Second tab shows list of all local disk drives with the details for each such as free space, used space and total space.

3. File Explorer : Once the analysis is complete, you can use File explorer and other tabs to view files, folders and disk space utilization grouped by file types, file attributes, file size, date and time, file ownership. To know more about this, you can check out **How to Use** section of this user manual.

4. Toolbar : Toolbar gives you quick access to frequently used functions of DiskAnalyzer Pro.

Scanning Drives / Paths

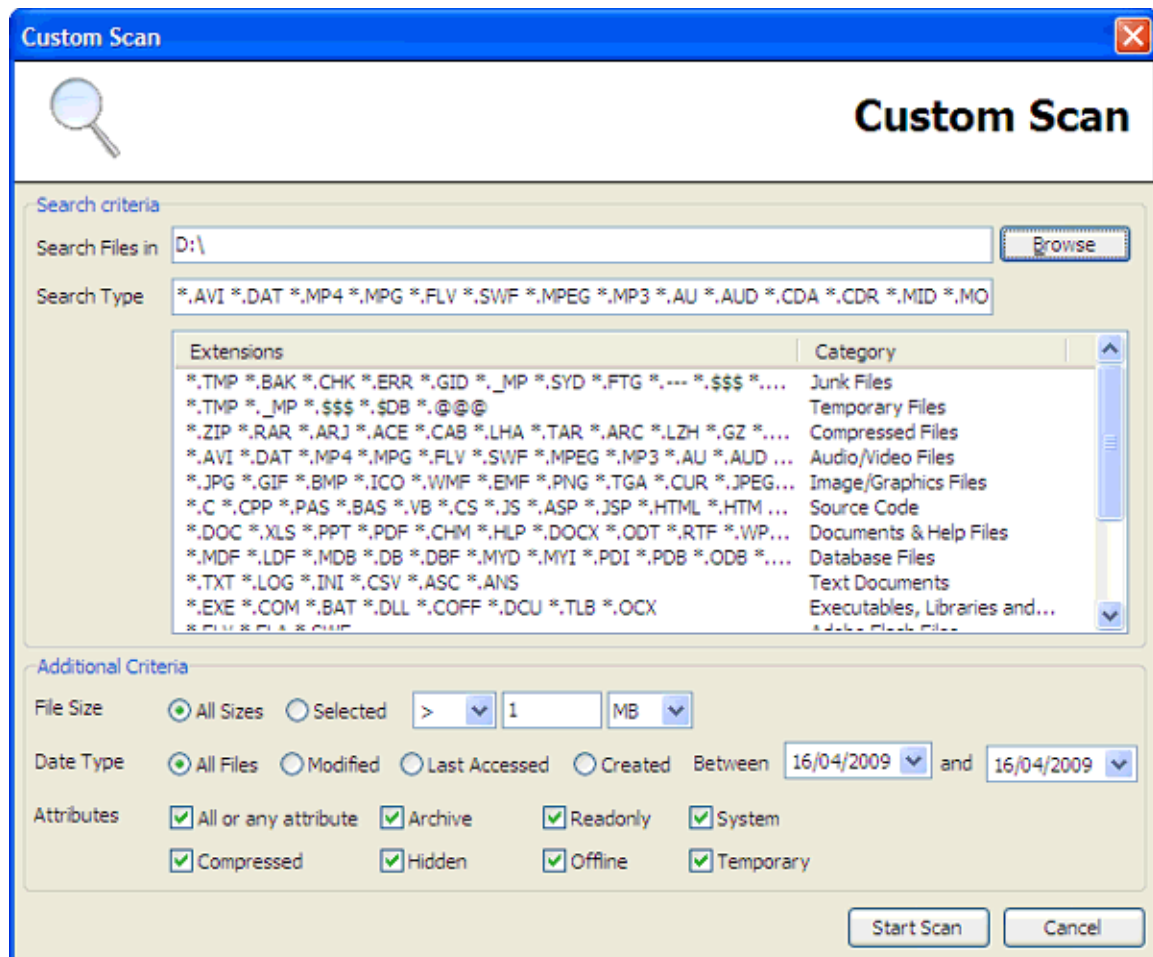
You can perform scanning on a particular folder or drive by two methods.

1. General scan

- a. Go to File->Scan Drive/Path menu
- b. Select drive/folder for scanning, scanning operation will start immediately. You can stop scanning any time by using Stop Scan command.

2. Custom Scan

- a. Go to File->Custom Scan menu



- b. Specify folder/drive to scan
- c. Specify search criteria. Here you can use wild cards. You can also select predefined search filters from the list.
- d. Specify size, date and attribute criteria if you want.
- e. Press start scan button to start scanning.

Understanding Scan / Analysis Results

After scanning operation is complete, you can view hard disk space utilization group on the File Explorer and other tabs.

File Explorer Tab

This tab is similar to windows explorer right pane, but it has some additional columns such as % of parent, folder size, allocated size, wasted size, no. of folders, no. of files, DOS name etc.

File Types Tab

This tab shows list of file types with no. of files, folders and total size occupied by the type (extension). This view will help you identify file types which are taking up most of your disk space. Double-click on any of the listed entries to view file details.

Attributes Tab

This tab shows disk space utilization by File attributes. In this view you can find out no. of hidden, system, compressed, read only and archive files. Double-click on any of the listed entries to view file details.

File Size Tab

This tab shows disk space utilization by file size. In this view files are grouped by range of file size e.g. 0..16 kb files, 16..32 kb files etc. Here you will notice that lesser the file size, more the wasted space. Double-click on any of the listed entries to view file details.

File Date Tab

This tab shows disk space utilization by using file date. You can view files modified or accessed or created today, yesterday, this month, last month etc. Double-click on any of the listed entries to view file details.

File Time Tab

This tab shows disk space utilization by created date, modified date and last accessed date with different time spans e.g. files modified between 1 am to 2 am. Double-click on any of the listed entries to view file details.

File Owners Tab

This tab shows disk space utilization by ownership of files. In this view you can find out which user is taking up most of your disk space. Double-click on any of the listed entries to view file details.

Special Analysis Tab

On this tab you can find zero size files, oldest files, biggest files, junk files, temporary files, internet cache files etc. Double-click on any of the listed entries to view file details.

All Folders (including subfolders) Tab

This tab shows you all folders and subfolders of the selected path. You can use this list to identify space hogging folders on your disk. Double-click on any of the listed entries to view file details.

Managing Files and Folders

DiskAnalyzer Pro allows you to perform various operations on files and folders after scanning operation is complete.

Commands for files and folders

1. Copy files

You can select and copy files and folders to another location using File -> Copy to another path command.

2. Move files

You can select and move files and folders to another location using File -> Move to another path command.

3. Delete files

You can select and delete files and folders to recycle bin using File -> Delete to recycle bin command.

4. ZIP files

You can select and add files and folders to ZIP file using built in zip command, no need to use any external program. Select the files you want to compress and Go to File -> Add to Zip command.

5. Rename files

You can select and rename any file or folder you want using File -> Rename command.

6. Command Prompt Here

You can use Command Prompt Here command on any folder you select to go to DOS Prompt and perform DOS commands.

7. Open With

You can use this command to open selected file with a different program than associated one.

8. Open with Windows Explorer

You can use this command to open selected folder with windows explorer.

9. File Preview

Use this command to preview the file inside DiskAnalyzer Pro within a small window.

Generating Disk Space Reports

Periodic Disk Space Reports are important since they allow you monitor disk space and see how disk space is being used over the period. DiskAnalyzer Pro allows you to generate formatted disk space reports from the disk space analysis.

You can export all disk space analysis including files list, file attributes list, ownership list, date wise list, file size list, biggest files list, oldest files list and all other reports to external file formats such as HTML, CSV, XML and ASCII Text.

These exported reports will help you understand disk space consumption over a particular period and gain control over the disk space usage.

To export reports from Main Window, go to File -> Export menu. To export from File Viewer / Explorer, use the "Export" tool button.

Configuring and Customizing

File Viewer displays list of files when you double-click on any of the analysis results

For example, if you double click on Big Size Files item in Special Analysis Tab as shown below then you will see File Explorer or Viewer with all big size files.

File Explorer	File Types	Attributes	File Size	File Date	File Time	File Ownership	Special Analysis	All Folders (including subfolders)
Type	No. of Files	Size	Allocated Space	Wasted Space				
Zero Size Files	807	0 bytes	13 MB	13 MB				
Temporary Files	876	116 MB	127 MB	11 MB				
Oldest Files	207	69 KB	3 MB	3 MB				
Junk Files	1573	220 MB	238 MB	18 MB				
Internet Temporary Files	3999	143 MB	194 MB	51 MB				
Image Files	20250	801 MB	1.02 GB	244 MB				
Files without Extension	4861	424 MB	485 MB	61 MB				
Compressed Files	520	1.02 GB	1.02 GB	4 MB				
Big Size Files	159	5.86 GB	5.86 GB	1 MB				
Audio/Video Files	2209	304 MB	328 MB	24 MB				

File Explorer - Search and Filter Files

File Filters

File Name:

Type:

Path:

Size: KB

Between: and KB

Date: Modified Last Accessed Created

Attributes: ☐ All or any attribute ☐ Archive ☐ Readonly ☐ Hidden ☐ System ☐ Temporary ☐ Compressed ☐ Offline

Top Files:

Apply Filter Remove Filter

Big Size Files

Name	Path	Type	Size	Allocated	Wasted	Modif
hiberfl.sys	C:\	System file	1526.49 MB	1526.50 MB	0.01 MB	15/04
pagefile.sys	C:\	System file	1526.42 MB	1526.42 MB	0.00 MB	15/04
MS.DNSP3.CAB	C:\WINDOWS\SoftwareDistribution\Download\ec0589ef...	DAT File	118.67 MB	118.67 MB	0.01 MB	09/02
MS.DNSP3.CAB	C:\Documents and Settings\All Users\Application Data\...	ALZip cab File	108.23 MB	108.23 MB	0.00 MB	14/09
MS.VSCC.v90_en_103...	C:\Documents and Settings\All Users\Application Data\...	Microsoft Help Attribute Definition File	100.96 MB	100.97 MB	0.01 MB	21/02
MS.VSCC.v90_1033_MKW...	C:\Documents and Settings\All Users\Application Data\...	Microsoft Help Attribute Definition File	100.96 MB	100.97 MB	0.01 MB	21/02
Dc105.csv	C:\RECYCLED\5-1-5-21-1757981266-121440339-72534...	Microsoft Office Excel Comma Separ...	96.24 MB	96.25 MB	0.01 MB	11/04
driver.cab	C:\WINDOWS\Driver Cache\i386\	ALZip cab File	73.15 MB	73.16 MB	0.01 MB	23/08
Sent	C:\Documents and Settings\All Users\Application Data\Thun...	File	71.92 MB	71.92 MB	0.00 MB	20/02
DataStore.edb	C:\WINDOWS\SoftwareDistribution\DataStore\	EDB File	63.01 MB	63.02 MB	0.01 MB	16/04
bdeui1.msi	C:\Documents and Settings\All Users\Local Settings\Tempor...	Windows Installer Package	61.79 MB	61.80 MB	0.01 MB	16/03
sunsetsetup_regnov.exe	C:\Documents and Settings\All Users\Desktop\Downloads\	Application	60.74 MB	60.75 MB	0.01 MB	30/03
Safe Browsing	C:\Documents and Settings\All Users\Local Settings\Temp\	THP File	57.18 MB	57.19 MB	0.01 MB	08/04
unclustfer3.sqlite	C:\Documents and Settings\All Users\Local Settings\Temp\	File	55.83 MB	55.84 MB	0.01 MB	31/03
dotnetfx3.exe	C:\Documents and Settings\All Users\Local Settings\Temp\	SQLITE File	54.48 MB	54.48 MB	0.01 MB	16/04
dotnetfx3.exe	C:\Program Files\Microsoft SDKs\Windows\v6.0A\Bootstr...	Application	50.33 MB	50.33 MB	0.00 MB	25/12
MS.VSCC.v90_1033_MKW...	C:\Documents and Settings\All Users\Application Data\...	Application	50.33 MB	50.33 MB	0.00 MB	12/12
MS.DNSP3.CAB	C:\Documents and Settings\All Users\Application Data\...	Microsoft Help Attribute Definition File	48.62 MB	48.63 MB	0.01 MB	21/02
fbbox.dat	C:\Documents and Settings\All Users\Application Data\...	Microsoft Help Attribute Definition File	48.61 MB	48.63 MB	0.01 MB	21/02
C:\WINDOWS\system32\drivers\	C:\WINDOWS\system32\drivers\	DAT File	48.43 MB	48.44 MB	0.01 MB	11/04
C:\Downloads\Software\	C:\Downloads\Software\	AVS Media Player Files	47.72 MB	47.73 MB	0.01 MB	16/04
MS.VSCC.v90_1033_MKW...	C:\Documents and Settings\All Users\Application Data\...	Microsoft Help Attribute Definition File	47.62 MB	47.63 MB	0.00 MB	21/02
MS.DNSP3.CAB	C:\Documents and Settings\All Users\Application Data\...	Microsoft Help Attribute Definition File	47.62 MB	47.63 MB	0.00 MB	21/02
software	C:\WINDOWS\system32\config\	File	46.00 MB	46.02 MB	0.02 MB	13/04
Y561401.CAB	C:\MSOCache\All Users\90000409-6000-11D3-8CFE-015...	ALZip cab File	45.46 MB	45.47 MB	0.01 MB	30/07
Movie VideoSuite 5.msi	C:\Documents and Settings\All Users\Local Settings\Temp\	Windows Installer Package	44.65 MB	44.66 MB	0.01 MB	24/08
MS.DNSP3.CAB	C:\Program Files\Software\	ALZip cab File	39.30 MB	39.31 MB	0.01 MB	05/01
sunset-beach-tsunami-orig...	C:\Downloads\Software\	AVS Media Player Files	38.96 MB	38.97 MB	0.01 MB	16/04
BP433_0_Pro_Demo.exe	C:\Documents and Settings\All Users\Local Settings\Temp\	Application	38.11 MB	38.11 MB	0.00 MB	15/02
solixor32.exe	C:\Program Files\Microsoft SDKs\Windows\v6.0A\Bootstr...	Application	36.45 MB	36.45 MB	0.00 MB	11/02
AdbeRdr90_en_US.exe	C:\Downloads\Software\	Application	33.50 MB	33.50 MB	0.00 MB	22/02
AdbeRdr90_en_US.msi	C:\Documents and Settings\All Users\Local Settings\Temp\	Windows Installer Package	33.18 MB	33.19 MB	0.00 MB	02/03
AdbeRdr90_en_US.msi	C:\Program Files\Adobe\Reader 8.0\Setup Files\AC768A...	Windows Installer Package	32.61 MB	32.63 MB	0.01 MB	26/10
P2561401.CAB	C:\MSOCache\All Users\90000409-6000-11D3-8CFE-015...	ALZip cab File	28.18 MB	28.19 MB	0.01 MB	30/07
(25098-409-8CFE-40B1-A5...	C:\Documents and Settings\All Users\Application Data\...	DeviceEmulator Saved State File	27.21 MB	27.22 MB	0.01 MB	26/07
(C0619473-063B-1911-B7...	C:\Documents and Settings\All Users\Application Data\...	DeviceEmulator Saved State File	27.15 MB	27.16 MB	0.00 MB	26/07
MS.DNSP3.CAB	C:\Program Files\Microsoft SDKs\Windows\v6.0A\Bootstr...	MSU File	27.01 MB	27.02 MB	0.00 MB	31/10
VSMLog2933.txt	C:\Documents and Settings\All Users\Local Settings\Temp\	Text Document	26.60 MB	26.61 MB	0.01 MB	20/02
incv1.aum	C:\WINDOWS\system32\drivers\Avg2\	AVM File	26.58 MB	26.58 MB	0.00 MB	28/09
SGRun.cab	C:\Program Files\Sony Setup\Kegias 7.0\mediamg\inside\...	ALZip cab File	26.13 MB	26.14 MB	0.01 MB	29/09
chrome_7z	C:\Documents and Settings\All Users\Local Settings\Temp\	ALZip 7z File	25.77 MB	25.78 MB	0.01 MB	31/03
OfficeR.cab	C:\MSOCache\All Users\90000409-6000-11D3-8CFE-015...	ALZip cab File	25.46 MB	25.47 MB	0.01 MB	20/02
Desktop Background.bmp	C:\Documents and Settings\All Users\Application Data\...	BMP File	24.00 MB	24.02 MB	0.02 MB	03/04
WD\32.HLP	C:\Program Files\Delphi7SE\help\	Help File	23.66 MB	23.66 MB	0.00 MB	15/05

2766 files found 13100.56 MB used 13124.17 MB allocated 23.61 MB wasted

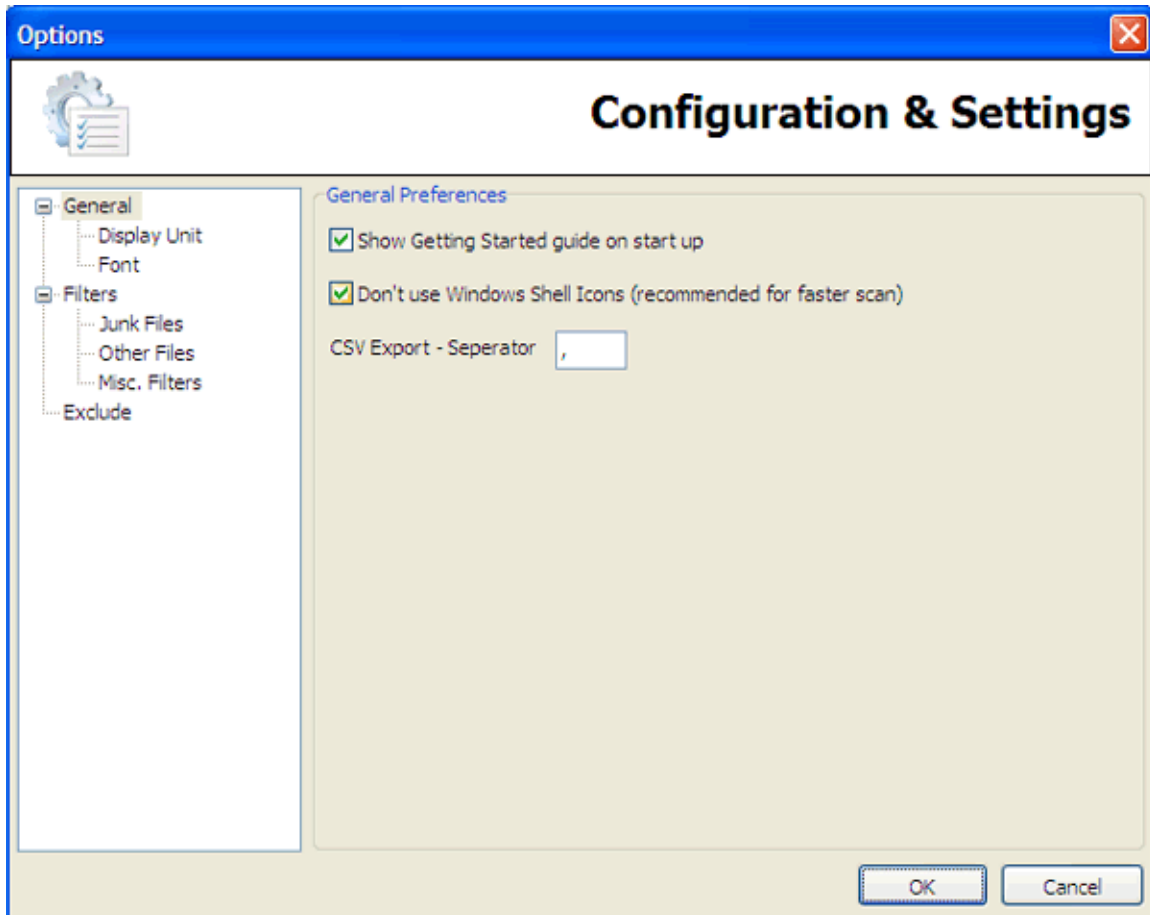
You can browse through the list, remove unwanted files, copy or move files, ZIP files, rename and even preview file contents from within file viewer. You will have to right-click for the context-menu and perform operations as required.

To the left side of the File Viewer, you can see a filter window. This filter window allows you to specify various file parameters and filter the files list. You can specify file name (with wild card), file types, path, date range, file attributes, file size range etc. Once you specify the filters, you can press Apply Filter button which will apply the filters to list and will show only matching files. Use Remove Filter button to see all files again.

The files list can be exported to external files such as HTML, CSV, ASCII and XML. The exported list can be used by other programs or used for the purpose of comparison with previous disk space reports.

Customizing and Configuring DiskAnalyzer Pro

You can customize and configure DiskAnalyzer Pro from Options window. Following is the list of major settings you can modify.



1. Turn on/off Getting Started window at start-up
2. Specify maximum limit for big size files
3. Specify oldest file date criteria
4. Enable / Disable use of shell icons. If you disable shell icons, program will use default icons and scanning disk drive will be faster.
5. Change no. of decimals places for file size.
6. Change display unit of file size on File explorer and other tabs
7. Specify filters for junk, compress, image, audio/video and temporary files.
8. Specify folders which you would like to exclude from scanning operation.
9. Specify files which you would like to exclude from scanning operation.
10. Specify separator used while exporting reports to CSV format.

Purchase and Support

Purchase DiskAnalyzer Pro

Thank you for your interest in buying DiskAnalyzer Pro.

Ordering DiskAnalyzer Pro is safe and secured. Your order will be processed by our e-commerce providers (RegNow or Avangate). Your personal and credit card details will be 100% safe. The information will be processed in encrypted form and it will be safe from hackers.

To order DiskAnalyzer Pro and know pricing details, please visit our website at <http://www.diskanalyzerpro.com/>

Technical Support

For any technical support, troubleshooting, bug report or any other problem, free free to contact us. Visit <http://www.diskanalyzerpro.com> to contact our support team.

You can directly contact us through email. Send in your issues to **support@craveworldwide.com**