




## **SUNPLUS DM Tool User's Manual**

V1.0 - Nov 28, 2003

SUNPLUS TECHNOLOGY CO. reserves the right to change this documentation without prior notice. Information provided by SUNPLUS TECHNOLOGY CO. is believed to be accurate and reliable. However, SUNPLUS TECHNOLOGY CO. makes no warranty for any errors which may appear in this document. Contact SUNPLUS TECHNOLOGY CO. to obtain the latest version of device specifications before placing your order. No responsibility is assumed by SUNPLUS TECHNOLOGY CO. for any infringement of patent or other rights of third parties which may result from its use. In addition, SUNPLUS products are not authorized for use as critical components in life support devices/ systems or aviation devices/systems, where a malfunction or failure of the product may reasonably be expected to result in significant injury to the user, without the express written approval of Sunplus.

19, Innovation Road 1 • Science-Based Industrial Park • Hsin-Chu • Taiwan • R.O.C.

% 886-3-578-6005 ☎ 886-3-578-4418  [www.sunplus.com](http://www.sunplus.com)

---

---

## 0 Table of Content

---

---

	<u>PAGE</u>
<b>0 TABLE OF CONTENT .....</b>	<b>2</b>
<b>1 DOCUMENT REVISION HISTORY.....</b>	<b>3</b>
<b>2 DM EDITOR GENERAL DESCRIPTION.....</b>	<b>4</b>
<b>3 INSTALLATION.....</b>	<b>5</b>
<b>4 QUICK START .....</b>	<b>6</b>
<b>5 LOOK THROUGH DM EDITOR.....</b>	<b>7</b>
5.1 REGION WINDOW.....	7
5.2 EDIT WINDOW.....	8
5.3 INPUT WINDOW.....	8
<b>6 NAVIGATION FOR DM EDITOR.....</b>	<b>9</b>
6.1 EDIT PICTURE.....	9
6.2 ZOOM.....	10
6.3 OUTPUT FILE .....	10
6.4 EXPORT CCHAR FILE .....	10
6.5 OPTION CONFIGURATION.....	11
6.5.1 <i>Font Side</i> .....	11
6.5.2 <i>Grid Color</i> .....	11
6.5.3 <i>Index Number</i> .....	11
6.6 TOOLBAR.....	12
6.7 HOTKEY .....	12
<b>7 TECH SUPPORT .....</b>	<b>13</b>

---

---

## 1 Document Revision History

---

---

Revision	Date	By	Remark
1.0	11/28/2003	Chunjuan He	First edition

---

---

## 2 DM Editor General Description

---

---

Welcome to the DM (Dot Matrix) Editor, an integrated picture and character editor. The user-friendly editor allows you to edit the picture and character efficiently with the pull down menu, short cut command, etc. This document can guide you through DM Editor installation, quick start and operation. For individual product specification, please contact your sale representative.

SUNPLUS TECHNOLOGY CO. reserves the right to change this documentation without prior notice. Information provided by SUNPLUS TECHNOLOGY CO. is believed to be accurate and reliable. However, SUNPLUS TECHNOLOGY CO. makes no warranty for any errors which may appear in this document. Contact SUNPLUS TECHNOLOGY CO. to obtain the latest version of device specifications before placing your order. No responsibility is assumed by SUNPLUS TECHNOLOGY CO. for any infringement of patent or other rights of third parties which may result from its use. In addition, SUNPLUS products are not authorized for use as critical components in life support devices/ systems or aviation devices/systems, where a malfunction or failure of the product may reasonably be expected to result in significant injury to the user, without the express written approval of Sunplus.

---

---

## 3 Installation

---

---

The DM Editor can be run on Windows98®, Windows2000® and WindowsXP®. Follow the on-screen instructions and DM Editor will be installed on your computer.

---

---

## 4 Quick Start

---

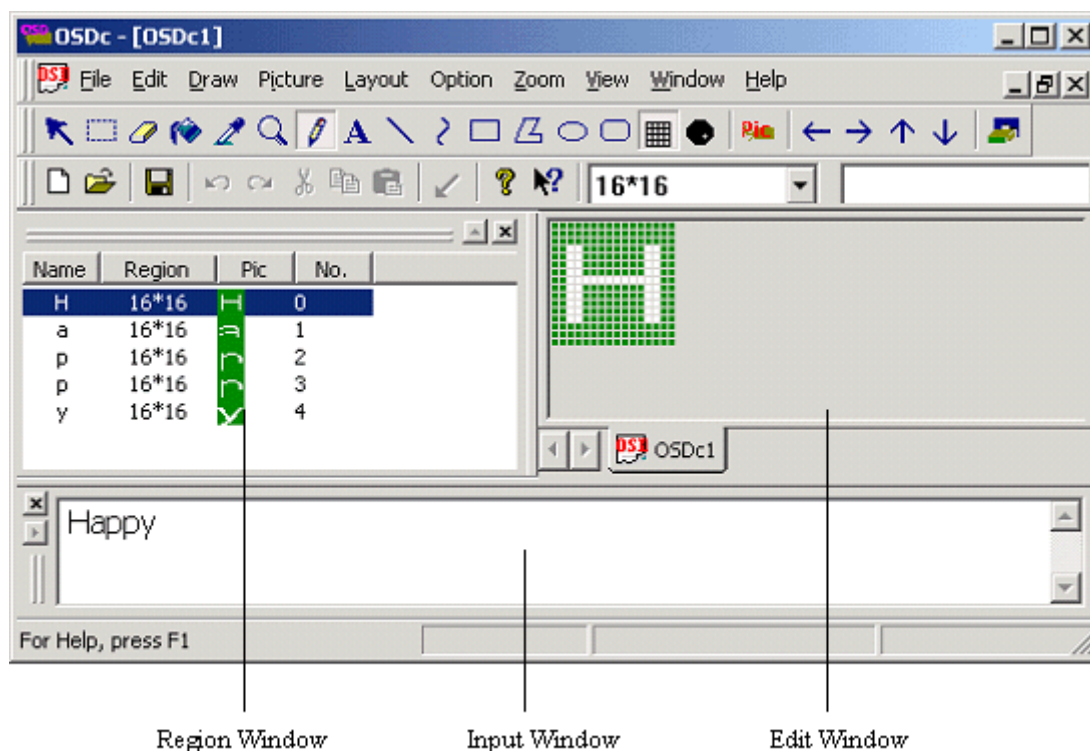
---

1. Run DM from Start menu.
2. Click [File]→[Open...] to open one \*.prj file.
3. Edit the picture.
4. Click [File]→[Save] to save the \*.prj file.
5. Click [File]→[Export CChar file...] to export the picture.

SUNPLUS TECHNOLOGY CO. reserves the right to change this documentation without prior notice. Information provided by SUNPLUS TECHNOLOGY CO. is believed to be accurate and reliable. However, SUNPLUS TECHNOLOGY CO. makes no warranty for any errors which may appear in this document. Contact SUNPLUS TECHNOLOGY CO. to obtain the latest version of device specifications before placing your order. No responsibility is assumed by SUNPLUS TECHNOLOGY CO. for any infringement of patent or other rights of third parties which may result from its use. In addition, SUNPLUS products are not authorized for use as critical components in life support devices/ systems or aviation devices/systems, where a malfunction or failure of the product may reasonably be expected to result in significant injury to the user, without the express written approval of Sunplus.

## 5 Look Through DM Editor

DM Editor includes a series of development tool that can be used to edit the character and picture. You are allowed to open more than one window at the same time on the screen. The major window you can see in DM Editor: Region Window, Edit Window and Input Window. You can click within window area to switch among the windows.



### 5.1 Region Window

Region window is used to display the attribute parameter of the picture added to one project.

Region			
Name	Region	Pic	No.
H	16*16	H	0
a	16*16	a	1
p	16*16	p	2
p	16*16	p	3
y	16*16	y	4

Name: Picture name.

Region: The size of picture.

Pic: The micropicture.

No.: The series number of picture in the library.

In Region window, you can:

Double click on Name for certain picture to change the picture name.

Drag current picture to the position you need.

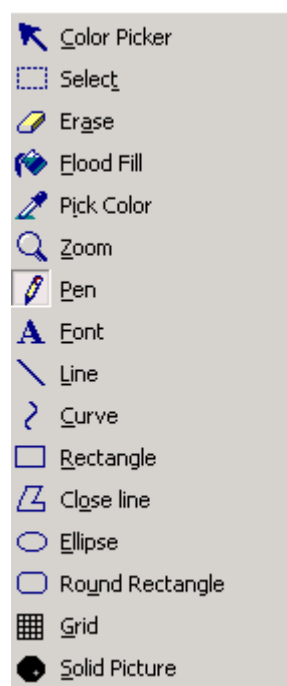
Press Ctrl and Shift when you select picture to help you select more pictures.

Right click on window and select 'Delete' and 'Clear' to delete current and all pictures, select 'Select All' to select all pictures.

## 5.2 Edit Window

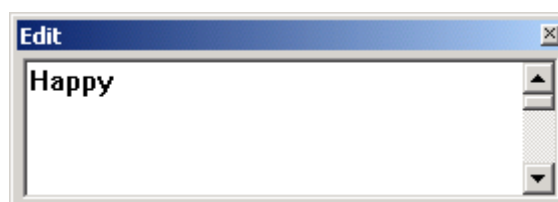
In Edit window, you can create and edit the picture and character to your need.

You can click [Draw] to enable the draw tool.



## 5.3 Input Window

In Input window, you can input the character. After you input the character, you can press Ctrl+Enter to ensure the input and the DM Editor can add the input to the Region window.





---

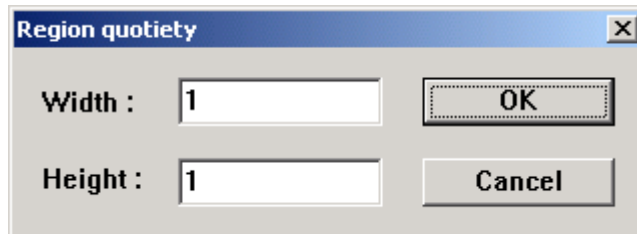
## 6 Navigation for DM Editor

---

### 6.1 Edit Picture

Insert Picture:

Click [Picture]→[Insert Picture...] to insert blank picture to the Region window.



Width and Height can be used to select the proportion for the default picture size.

Clear Picture:

Clear the picture.

Add ASCII:

Add ASCII 0~127 to Region window.

Import Picture:

Import picture model BMP picture to Region window.

Import Font Picture:

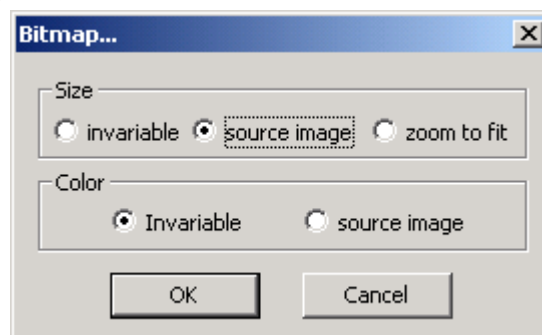
Input font model BMP picture to Region window.

Add arbitrary size picture:

Click [Picture]→[Add arbitrary size picture... ] to add one blank picture with user defined size to Region window. You can set the width and height for picture.



Note: When you select 'Import Picture' and 'Import Font Picture', you can open Bitmap dialog box to set size and color according your need.



## 6.2 Zoom

Zoom on the center of current picture. You can click [Zoom] to set the show percentage to your need.

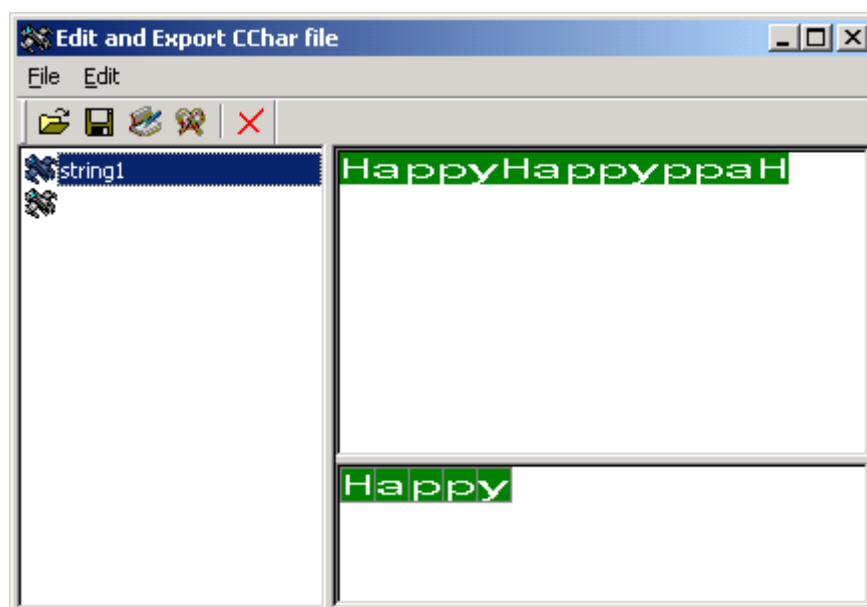
## 6.3 Output File

Export CChar File:

Click [File]→[Export CChar File] to export character to \*.h and \*.c.

## 6.4 Export CChar File

Click [File]→[Export CChar File...] to export character to \*.h and \*.c. After you enable the Export CChar File, the screen Edit and Export CChar file can be shown.



The left area is the string edit window. You can double click behind the prompt to enter the string name. You can find the character for current string on the top right area. On the bottom of the screen, click the character to add to the top right area.

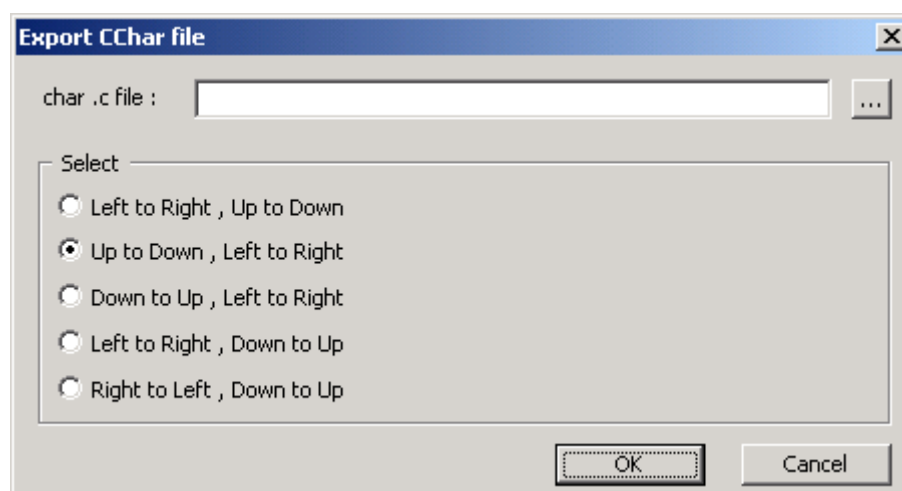
Click [File]→[Save String...] and you can save current string with \*.str.

Note: Because the \*.str can only save the number in the font library for the character, you should save the project after you save the string for further edit.

Click [File]→[Export CChar File...] and two files can be exported.

char .h file: Define the number in font library for each character.

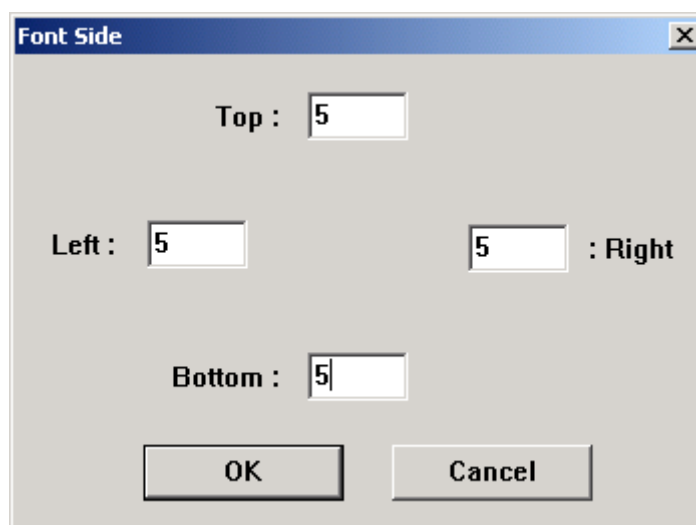
char .c file: Save matrix for each character.



## 6.5 Option Configuration

### 6.5.1 Font Side

Click [Option]→[Font Side...], you can toggle on the dialog box to set border for character.

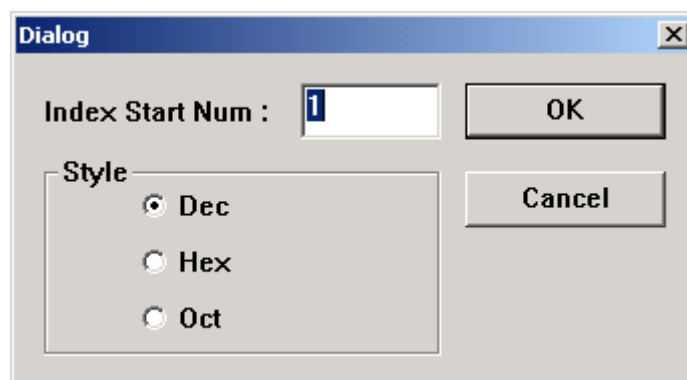


### 6.5.2 Grid Color

Click [Option]→[Grid Color...], you can set grid color for picture.

### 6.5.3 Index Number

Click [Option]→[Index Setting] and you can change the series number of picture.



## 6.6 Toolbar

-  Add picture
-  Move up
-  Move down
-  Move left
-  Move right
-  Export DM file

## 6.7 Hotkey

- Ctrl+1,2,3,4: Zoom
- Ctrl+A: Select all
- Ctrl+C: Copy
- Ctrl+E: Export Out DM file
- Ctrl+I: Insert from clipboard
- Ctrl+L: Clear picture
- Ctrl+N: New
- Ctrl+O: Open
- Ctrl+S: Save
- Ctrl+X: Cut
- Ctrl+V: Paste
- Ctrl+Y: Redo
- Ctrl+Z: Undo

---

## 7 Tech Support

---

**DM Editor** is designed to be easy to use, however, on occasion you may need some explanation or help with an issue. In most cases, you can find the help you need right in your computer, this Help file, and **DM Editor** user manual should contain the answers to most of your questions. In addition, you'll find extensive support material available around-the-clock at our site on the World Wide Web. If you still experience difficulties, our technical support staff is available via Email, FAX, or phone. We recommend sending your technical questions electronically (Email) for the most efficient handling of your request.

For furthermore tech support, you can contact with your Sunplus representatives.

**Web Site Support:**

<http://www.sunplus.com>

**Email Support:**

[fae@sunplus.com](mailto:fae@sunplus.com)

**Phone Support:**

886-3-5786005

**Fax Support:**

886-3-5776547