

## Kingston SKC100S3 Toolbox

### About SKC100S3 Toolbox

The SKC100S3 Toolbox enables users to read SKC100S3 drive information such as Serial Numbers, Firmware Versions, and SMART attributes.

### System Requirements

#### Platform

- PC with SATA II or SATA III interface
- SKC100S3 series SSD

#### OS Support

- Windows® 7
- Windows® Vista SP2
- Windows® XP SP3

### Getting Started

#### Step 1: Launching the utility

For Windows 7 and Windows Vista (SP2) users, right-click the “KTSSDToolbox.exe” and “Run as administrator” to launch the utility. (See Figure 1)

For XP (SP3) users, double-click on “KTSSDToolbox.exe” to launch the utility.



Figure 1 – Locate and launch

#### Step 2: Exploring the Home Screen

By default, the “Drives” button will be selected when the interface appears on screen.

Your SKC100S3xxx drive will appear in the device window and will display **Model Number, Capacity, Serial Number, Firmware and WWN**. (See Figure 2 – Home Screen)

(Note: You may connect multiple SKC100S3x/xxx drives to your host system but the utility will only display data for the selected drive.)

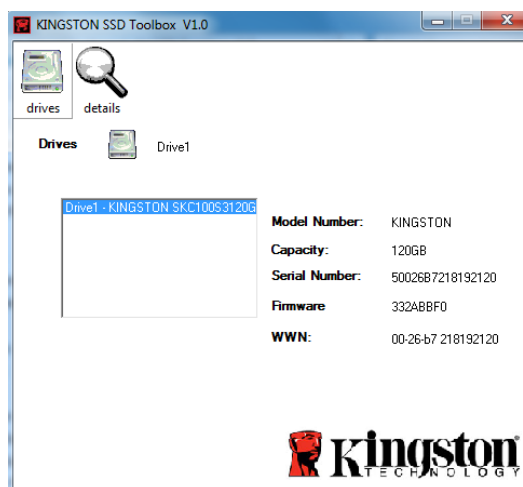


Figure 2 – Home Screen



### **Step 3: Exploring the Drive Details**

To display drive details, select the **Details** button at the top of the interface. This will reveal additional drive information.

The **Identify Data** button will display hardware device data specific to your SSD's configuration. (See Figure 3 – Identify Data)

The **SMART Data** button will display all S.M.A.R.T. (Self-Monitoring, Analysis and Reporting Technology) attributes that pertain to your device. (See Figure 4 – SMART Data)

For additional information related to supported attributes, visit [www.kingston.com/support/ssdnow](http://www.kingston.com/support/ssdnow) and navigate to the **SMART Attributes PDF** file located under the SKC100S3x/xxx section.



#### **Identify Data**

Display IDENTIFY DEVICE DATA

*Figure 3 – Identify Data*



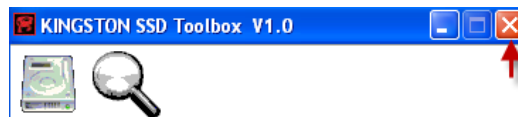
#### **SMART Data**

Display SMART READ DATA

*Figure 4 – SMART Data*

### **Step 4: Exiting the SSD Toolbox**

To exit the utility, click on the "X" located in the upper right corner of the interface. (See Figure 5 – Exiting the Toolbox)



*Figure 5 – Exiting the Toolbox*

For additional support information, please visit [www.kingston.com/support](http://www.kingston.com/support)