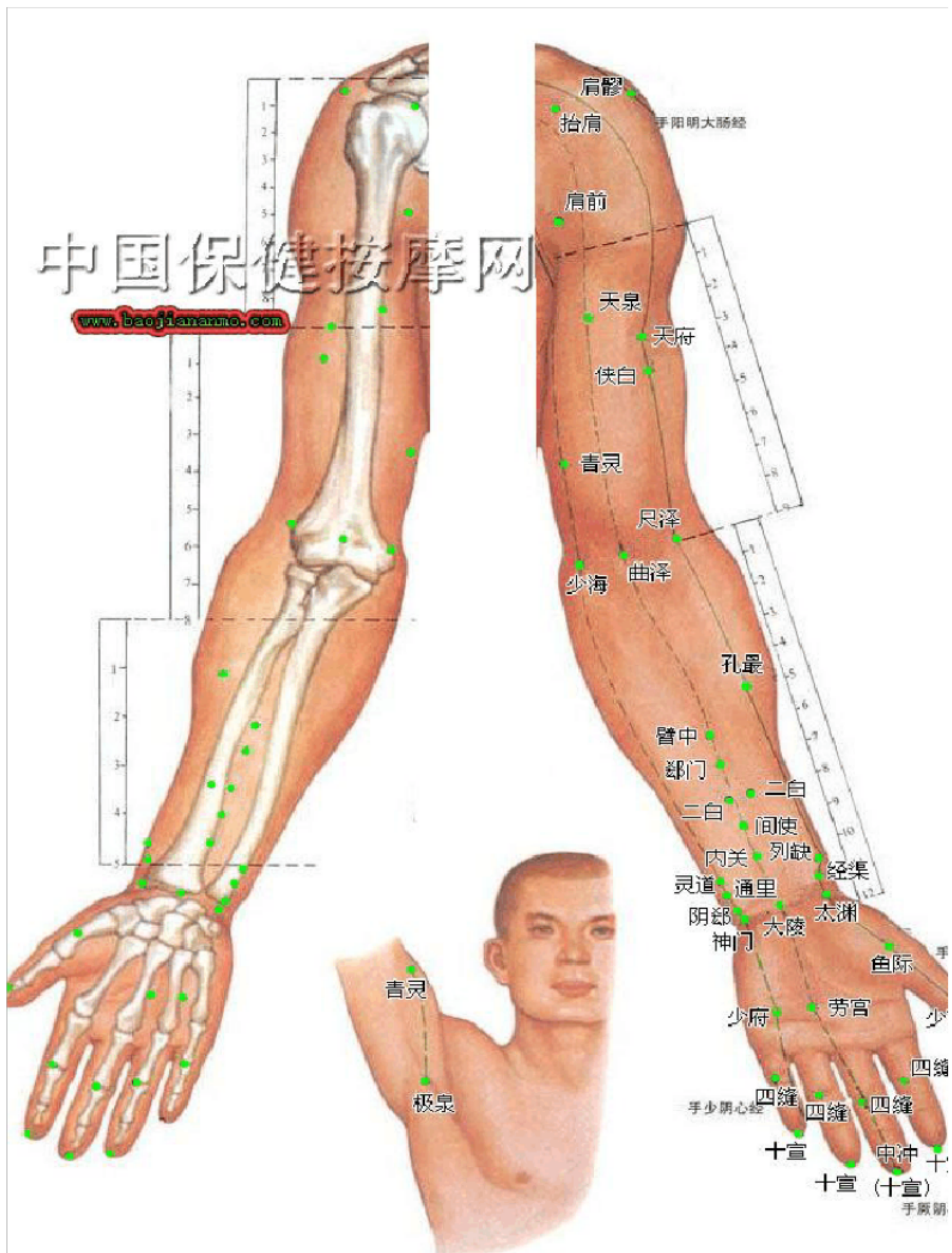
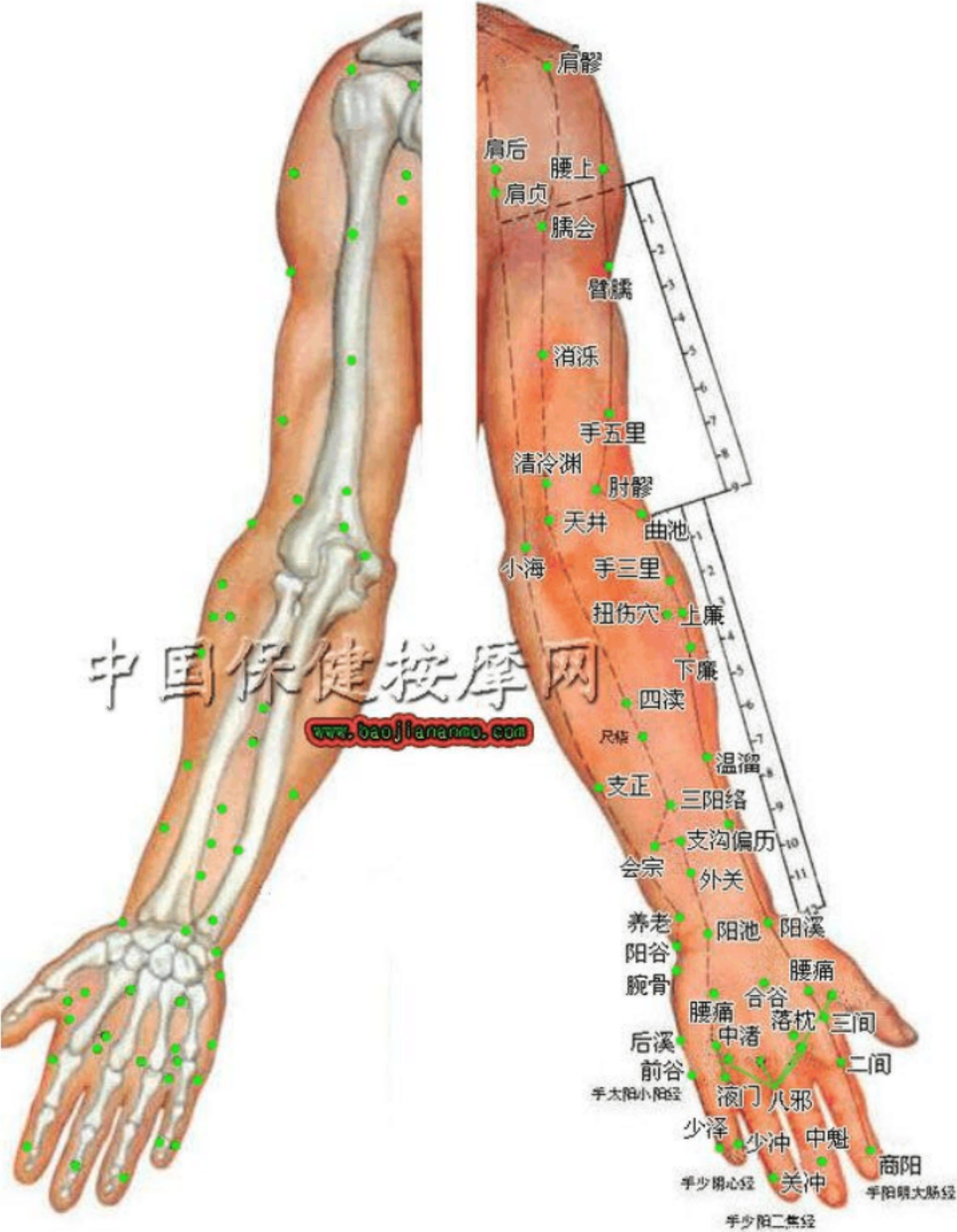


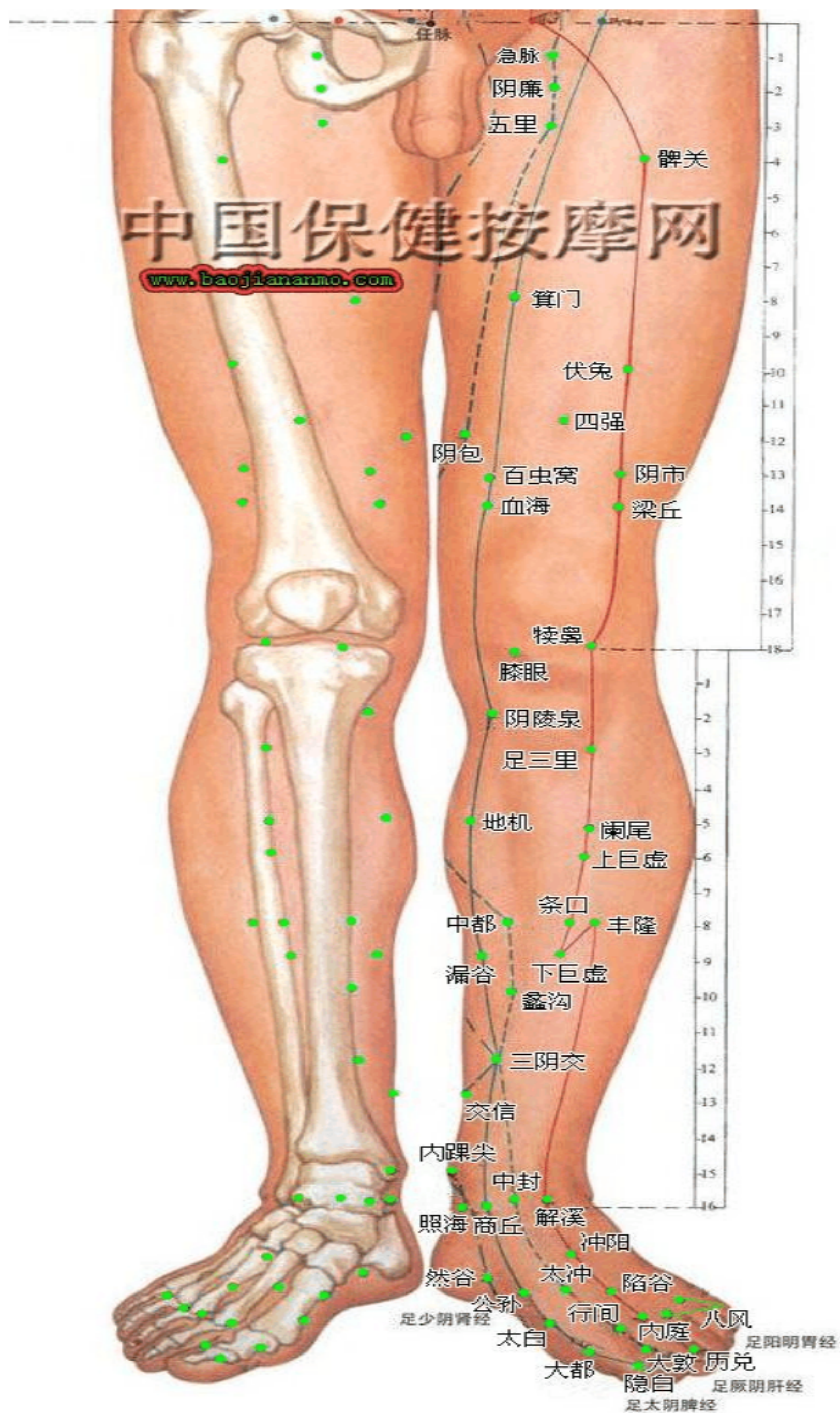
人体穴位分布图（超清晰彩图版）



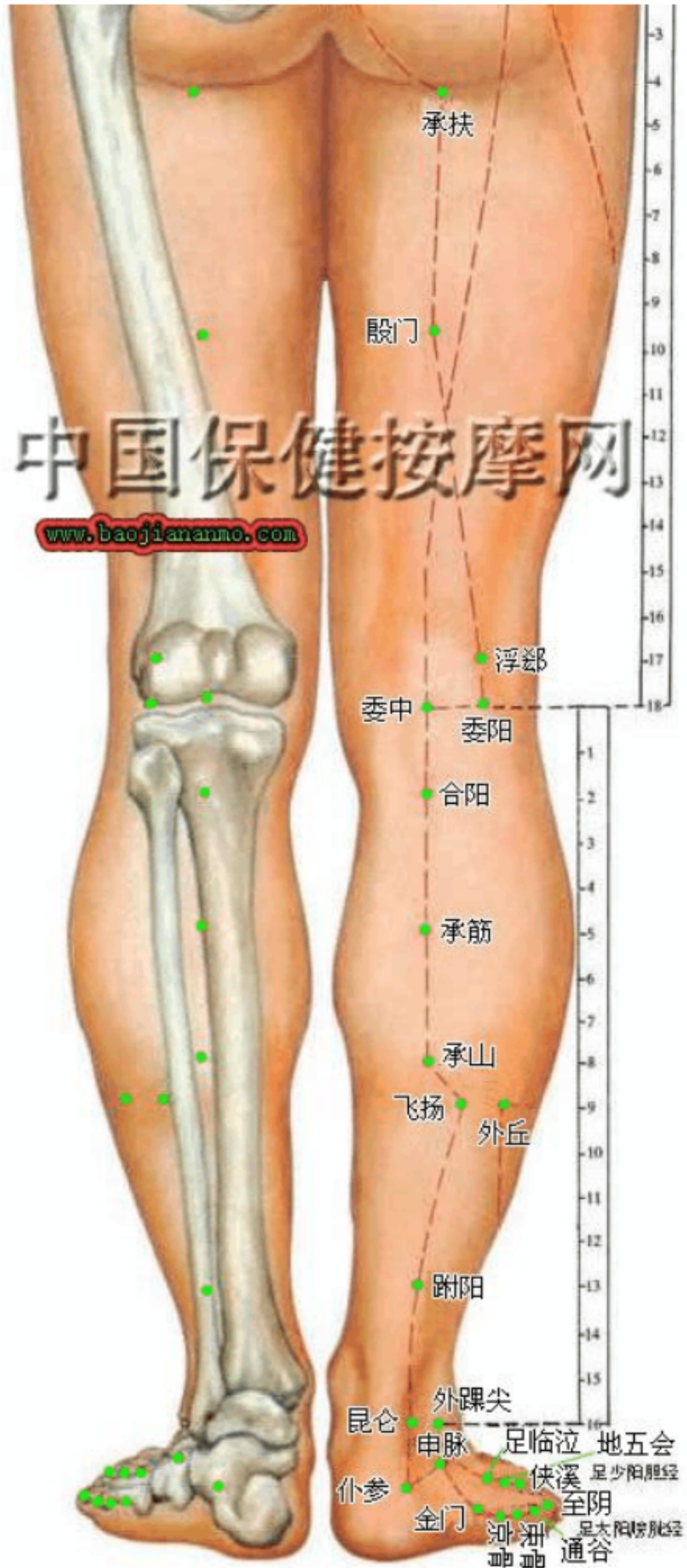
人体上肢正面穴位图



人体上肢背面穴位图



人体下肢正面面穴位图



人体下肢背面穴位图

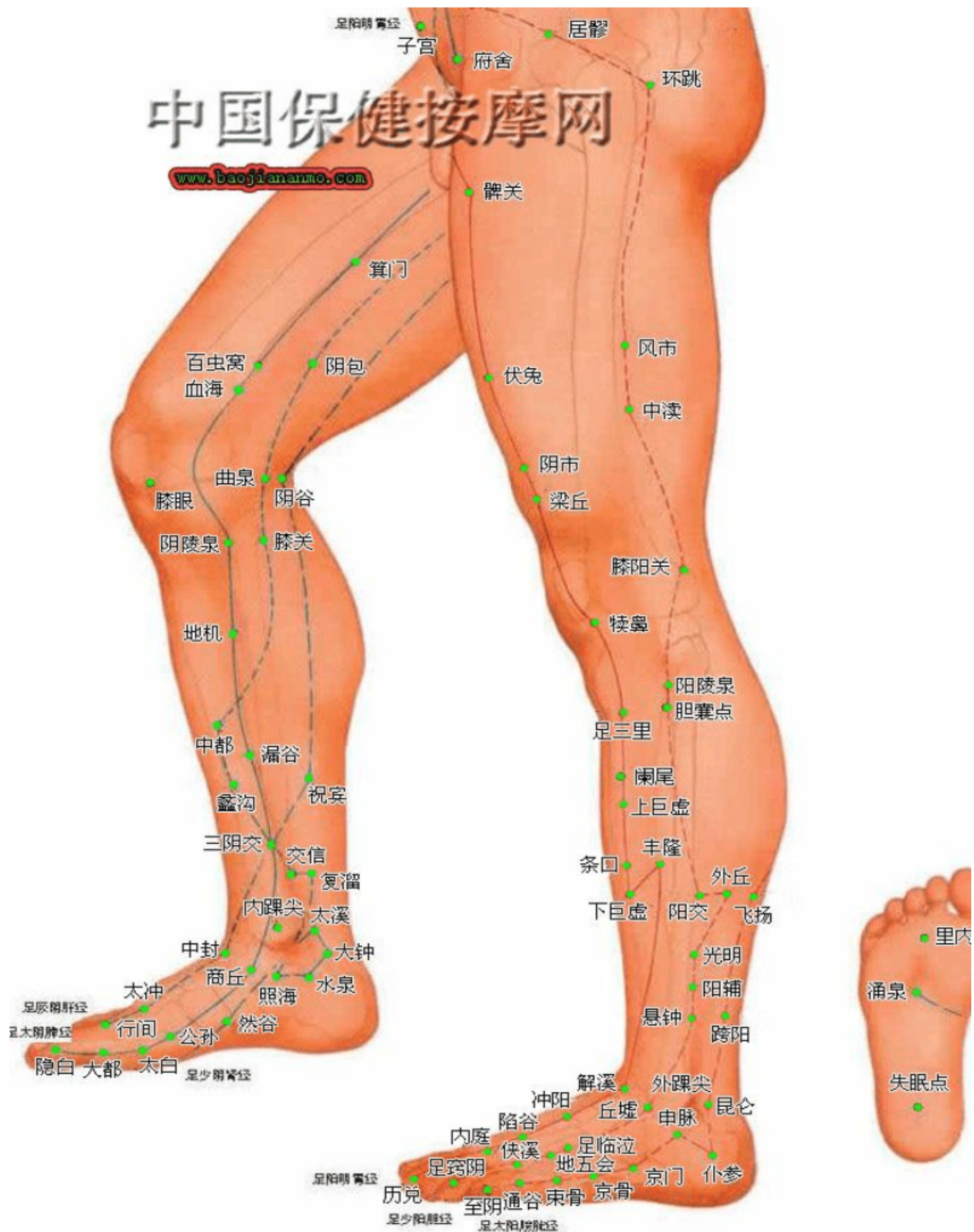


Diagram illustrating the locations of various acupoints (穴) on the human back, categorized by the Bladder Meridian (膀胱经) and other meridians. The diagram shows the spine, ribs, and major organs, with acupoints marked by green dots and labeled with Chinese characters.

Bladder Meridian (膀胱经) Acupoints (from top to bottom):

- 大椎 (Dà Zhuī)
- 陶道 (Táo Dào)
- 身柱 (Shēn Zhù)
- 神道 (Shén Dào)
- 灵台 (Líng Tái)
- 至阳 (Zhì Yáng)
- 筋缩 (Jīn Suō)
- 中椎 (Zhōng Zhuī)
- 脊中 (Jǐ Zhōng)
- 悬枢 (Xuán Shū)
- 命门 (Mìng Mén)
- 腰阳关 (Yāo Yáng Guān)
- 七椎下 (Qī Zhuī Xià)
- 腰奇 (Yāo Qí)
- 腰俞 (Yāo Yú)
- 长强 (Cháng Qiáng)
- 督脉 (Dū Mài)

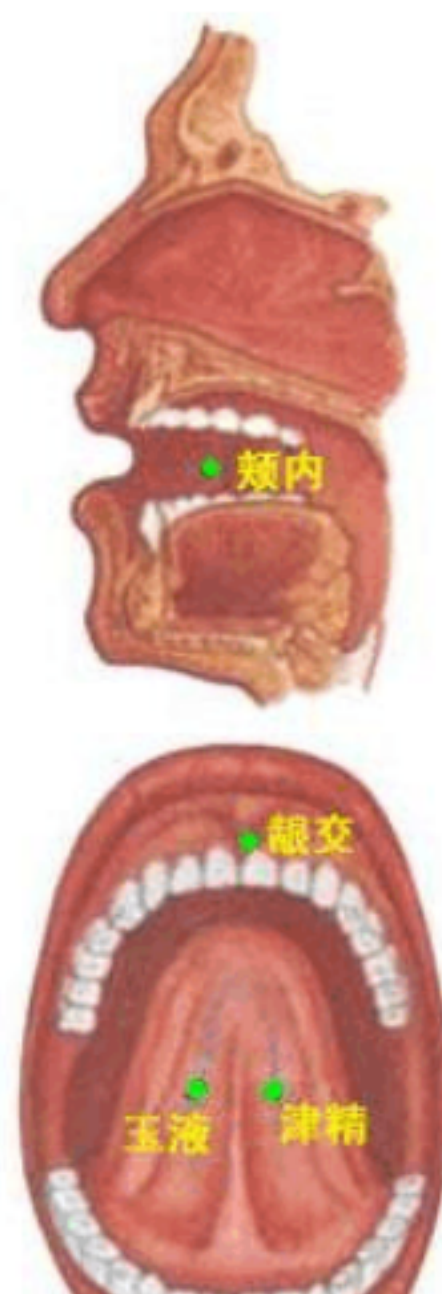
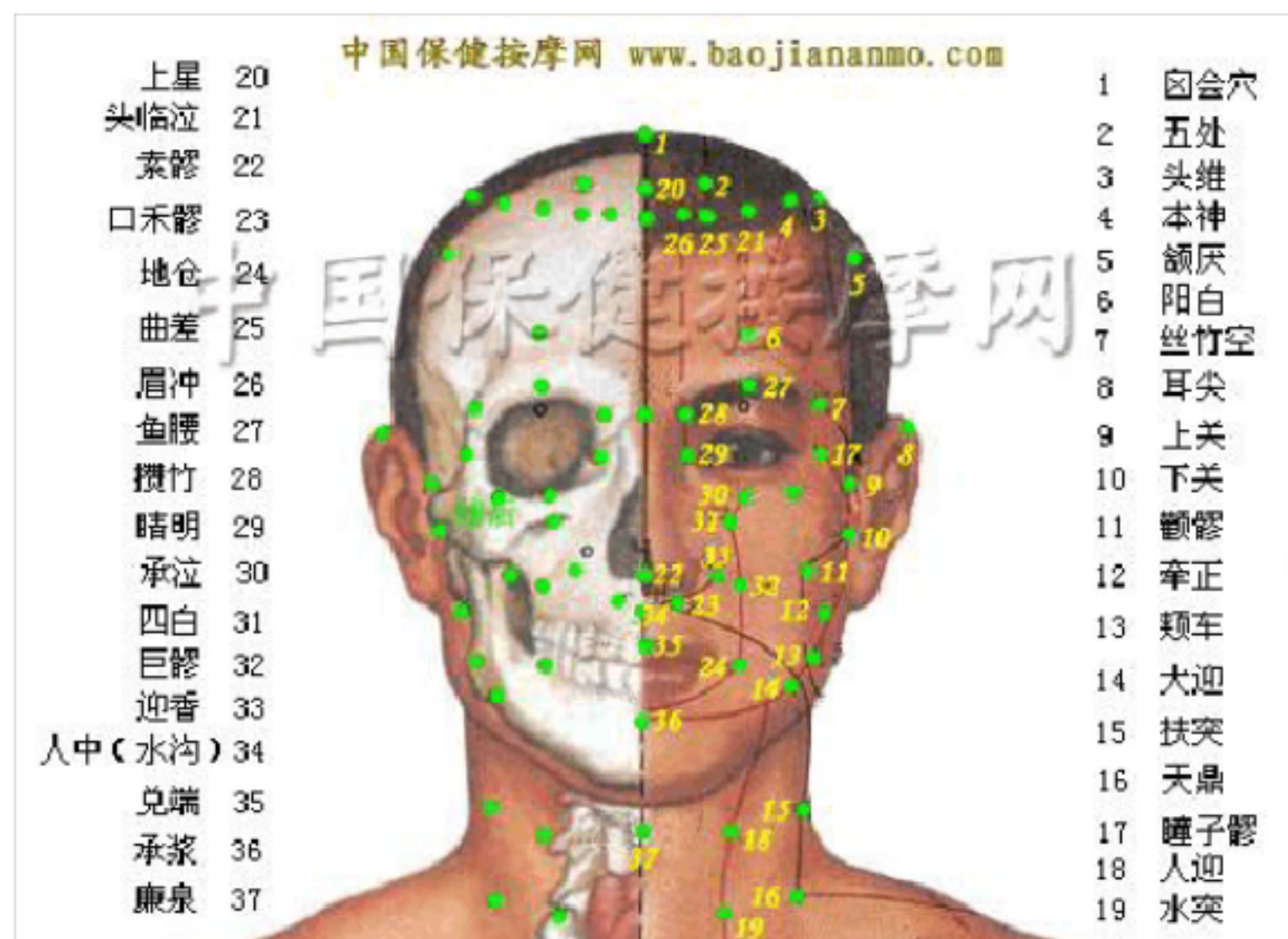
Other Meridians and Points:

- Heart Meridian (心经):** 心俞 (Xīn Yú), 督俞 (Dū Yú), 膈俞 (Gé Yú)
- Lung Meridian (肺经):** 肺俞 (Fèi Yú), 厥阴俞 (Jué Yīn Yú), 心俞 (Xīn Yú)
- Small Intestine Meridian (小肠经):** 小肠俞 (Xiǎo Cháng Yú), 膀胱俞 (Bāng Guāng Yú), 中膈俞 (Zhōng Gē Yú), 下膈俞 (Xià Gē Yú)
- Large Intestine Meridian (大肠经):** 大肠俞 (Dà Cháng Yú)
- Liver Meridian (肝经):** 肝俞 (Gān Yú), 魂门 (Hún Mén)
- Gallbladder Meridian (胆经):** 胆俞 (Dǎn Yú), 阳纲 (Yáng Gāng)
- Spleen Meridian (脾经):** 脾俞 (Pí Yú), 意舍 (Yì Shě), 胃仓 (Wèi Cāng), 痞根 (Pǐ Gēn)
- Stomach Meridian (胃经):** 胃俞 (Wèi Yú), 三焦俞 (Sān Jiāo Yú), 盲门 (Máng Mén), 京门 (Jīng Mén), 志室 (Zhì Shì), 气海俞 (Qì Hǎi Yú)
- Bladder Meridian (膀胱经) (continued):** 肝俞 (Gān Yú), 胆俞 (Dǎn Yú), 脾俞 (Pí Yú), 胃俞 (Wèi Yú), 三焦俞 (Sān Jiāo Yú), 肾俞 (Shèn Yú), 气海俞 (Qì Hǎi Yú), 大肠俞 (Dà Cháng Yú), 腰眼 (Yāo Yǎn), 关元俞 (Guān Yuán Yú), 小肠俞 (Xiǎo Cháng Yú), 膀胱俞 (Bāng Guāng Yú), 中膈俞 (Zhōng Gē Yú), 下膈俞 (Xià Gē Yú), 白环俞 (Bái Huán Yú), 环中 (Huán Zhōng), 环跳 (Huán Tiào)
- Other Points:** 肩井 (Jiān Jǐng), 肩中俞 (Jiān Zhōng Yú), 天髎 (Tiān Liáo), 巨骨 (Jù Gǔ), 臑俞 (Nǎo Yú), 肩外俞 (Jiān Wài Yú), 曲垣 (Qū Yuán), 附分 (Fù Fēn), 魄户 (Pò Hù), 膏肓 (Gāo Hū), 天宗 (Tiān Zōng), 肩后 (Jiān Hòu), 肩贞 (Jiān Zhēn)

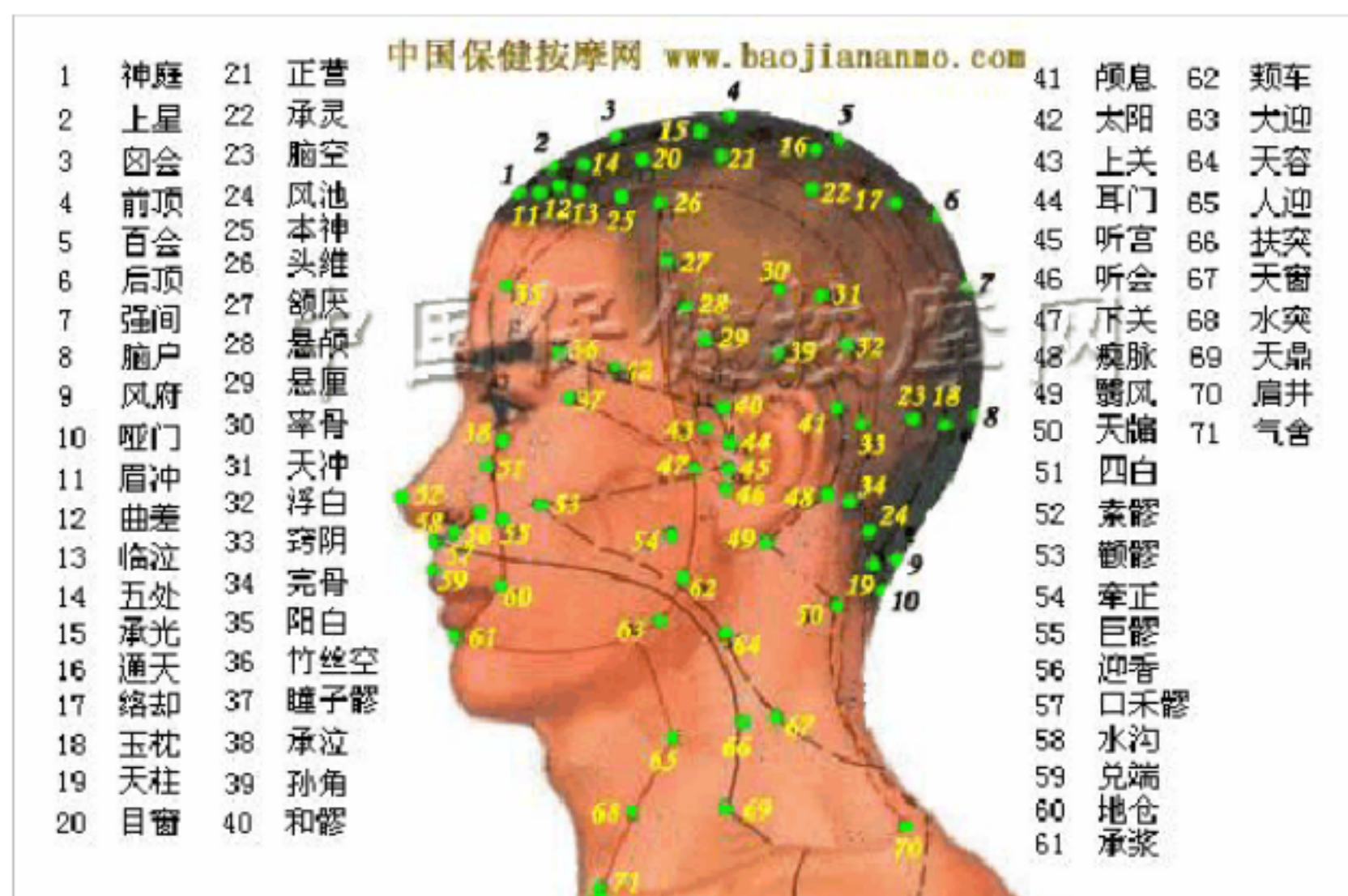
中国保健按摩网
www.baojiananmo.com

中国保健按摩网

www.baojiananno.com



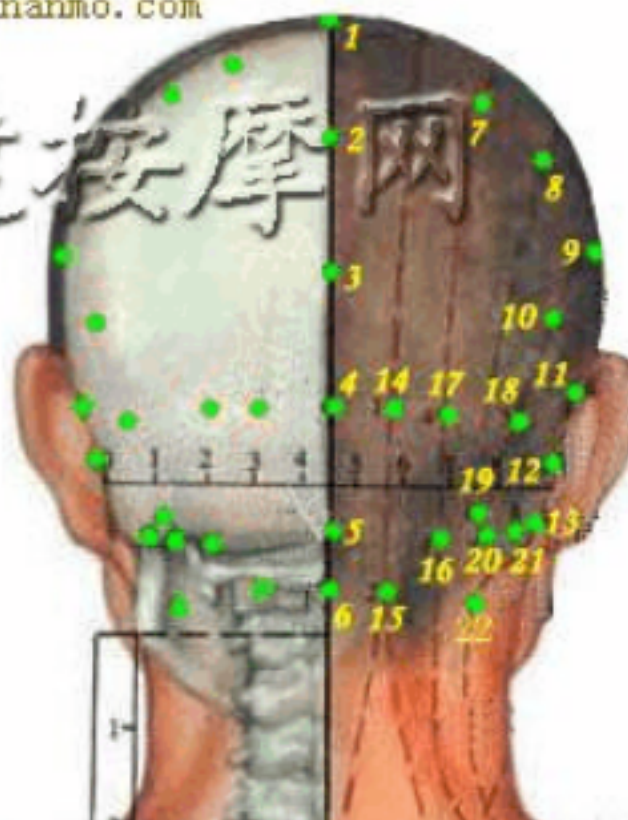
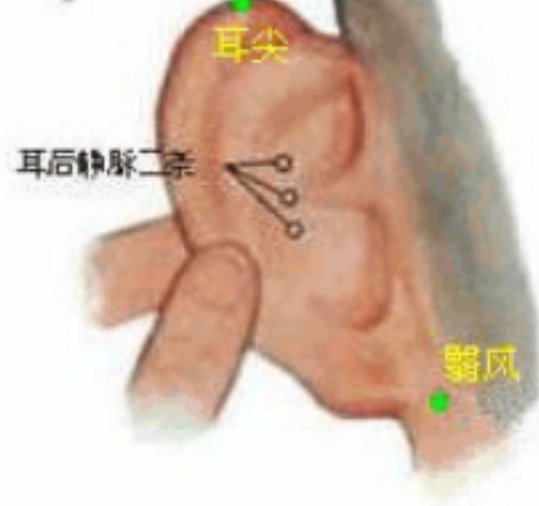
人体头部侧面穴位图



人体头部背面穴位图

中国保健按摩网 www.baojiananmo.com

中国保健按摩网



1	百会
2	后顶
3	强间
4	脑户
5	风府
6	哑门
7	络却
8	承灵
9	天冲
10	浮白
11	颅息
12	颊脉
13	翳风
14	玉枕
15	天柱
16	风池
17	脑空
18	窍阴

19	完骨
20	安眠
21	翳明
22	天牖



